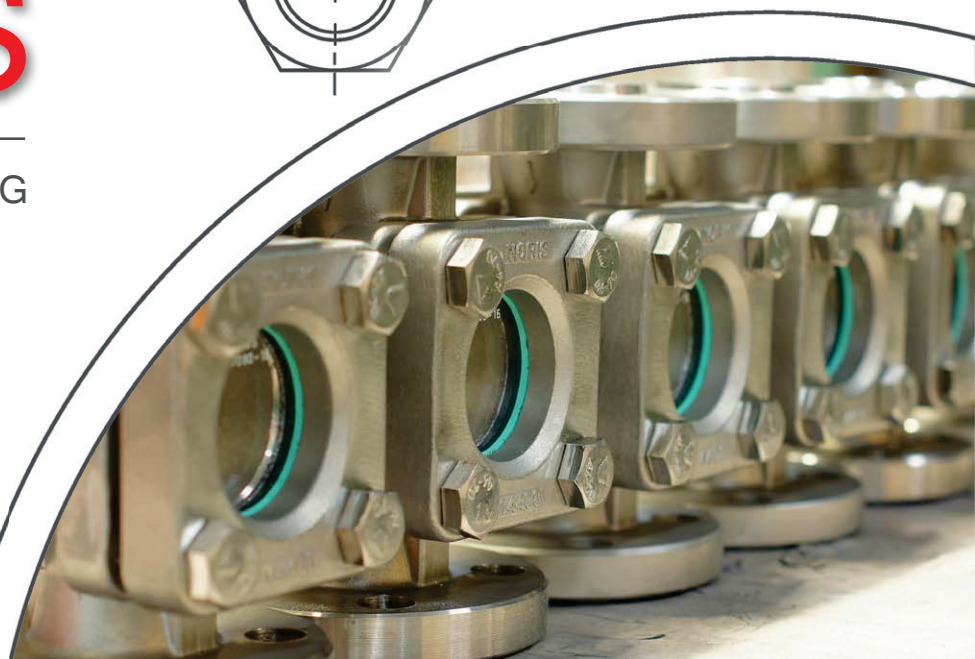
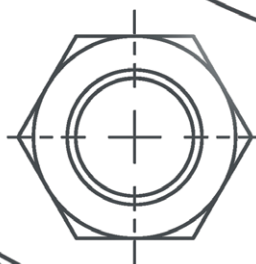
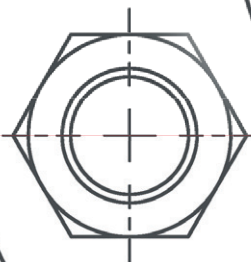
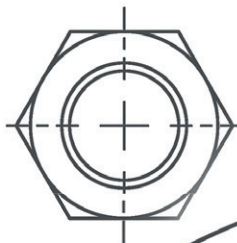


# NORIS

— ARMATUREN —

BURKENSTEIN GMBH & Co. KG



Tank Sight Glass Fittings

Sight Flow Indicators

Strainers

TRUST

IN WHAT YOU SEE.

# NORIS Sight Flow Indicators

## With Flange Connection DIN / ANSI



type	BF 880	BF 885	BF 112	BF 912	BF 108-B
description	DIN 3237	DIN 3236	without residual fluid	high-pressure design	loose flanges
pressure	PN 16 - PN 40	PN 16 - PN 40	PN 16	up to PN 160	PN 10
size	DN 15 - DN 200	DN 15 - DN 150	DN 15 - DN 400	DN 15 - DN 100	DN 15 - DN 80

all flanges available in ANSI design (see data sheet)

## With Thread



type	BF 881
description	G- (BSP) or NPT- thread
pressure	PN 16 - PN 40
size	1/4" - 2"

## In Angle- or Multiway-Line



type	BF 920
description	angle-line
pressure	PN 10 - PN 40
size	DN 15 - DN 200



type	BF 972
description	3-way-line
pressure	PN 16 - PN 40
size	DN 15 - DN 200



type	BF 974
description	4-way-line
pressure	PN 16 - PN 40
size	DN 15 - DN 200

## With Welding Ends



type	BF 880-S
description	butt weld ends
pressure	PN 16 - PN 40
size	DN 15 - DN 200



type	BF 880-SOW
description	socket weld ends
pressure	PN 16 - PN 40
size	DN 15 - DN 100



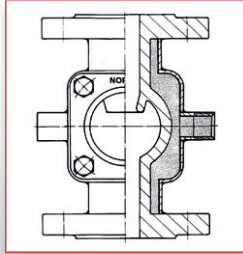
type	BF 112-S
description	without residual fluid
pressure	PN 16
size	DN 10 - DN 400



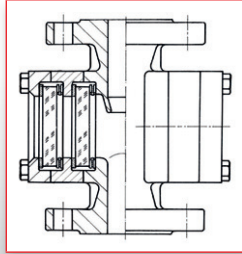
type	BF 912-S
description	high-pressure design
pressure	up to PN 160
size	DN 15 - DN 100

# NORIS Sight Flow Indicators

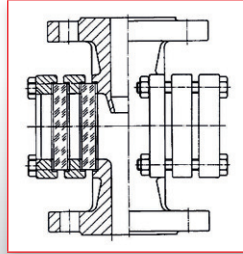
## Additional Equipment



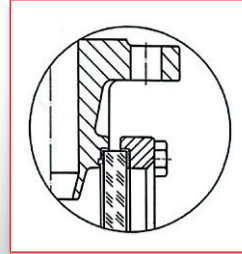
heating jacket



safety double windows



double windows



vacuum sealing



spray washer

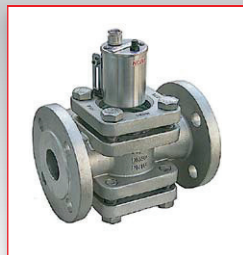
description



flap indication



spinner



light fitting  
standard or EX-design



wiper BF190-T / 190-F  
with T-handle or freewheel



protective grid

description

## Materials

### casting materials

- GG-25
- GS-C 25
- 1.4408
- other materials on request

### welding materials

- carbon steel
- 1.4571
- other materials on request

## Tubular Sight Glasses DIN / ANSI



BF 20



BF 25



BF 25-B

type	BF 20	BF 25	BF 25-B
description	standard	safety sealing	with ball indication
pressure	up to 6 bar	up to 6 bar	up to 6 bar
size	DN 15 - DN 200	DN 15 - DN 200	DN 25 - DN 100
materials	carbon steel / 1.4571	carbon steel / 1.4571	carbon steel / 1.4571

### NORIS tubular sight glasses available with:

- DIN / ANSI flanges (see data sheet)
- thread
- welding ends

# NORIS Tank Sight Glass Fittings

## To Be Welded Directly to Tanks



type	BF 120	BF 118	BF 220	BF 225	BF 127	BF 230
description	DIN 28120	light design	rectangular	obround	similar to DIN 11851	with welding end
pressure	PN 6 - PN 16	PN 2,5	PN 16	PN 3 - PN 25	PN 6	PN 10 - PN 63
size	DN 25 - DN 200	DN 50 - DN 200	see data sheet	see data sheet	DN 50 - DN 125	DN 25 - DN 200
materials	c-steel / 1.4541 / 1.4571	carbon steel / 1.4571	carbon steel / 1.4571	carbon steel / 1.4571	1.4404 / 1.4301	c-steel / 1.4541 / 1.4571

## To Be Mounted to Existing Flanges DIN / ANSI



type	BF 121	BF 1205	BF 232	further opportunities
description	DIN 28121	manhole sight glass	with male thread	<ul style="list-style-type: none"> <li>BF 121 and BF 1205 available in ANSI design</li> <li>all tank sight glass fittings available in special materials</li> <li>special flanges on request</li> </ul>
pressure	PN 10 - PN 25	acc. to arrangement	up to PN 40	
size	DN 40 - DN 200	DN 150 - DN 800	G (BSP)	
materials	carbon steel / 1.4571	c-steel / 1.4541 / 1.4571	carbon steel / 1.4571	

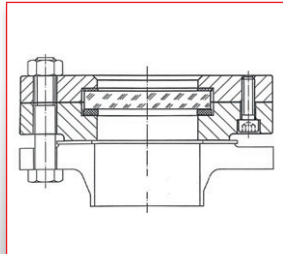
## Materials

### welding materials

- HII / C 22.8
- 1.4541
- 1.4571
- other materials on request

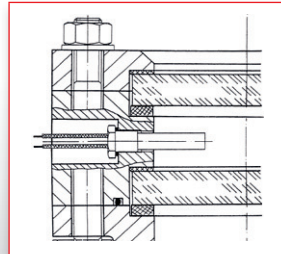
# NORIS Tank Sight Glass Fittings

## Additional Equipment



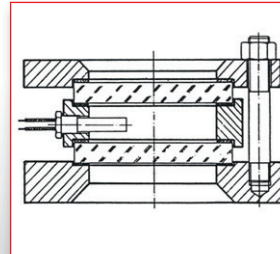
**high-temperature**

$T_{max} > 200\text{ °C} *$



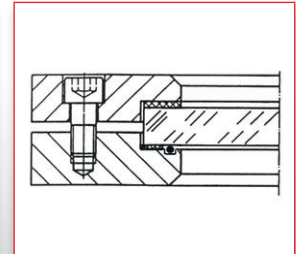
**safety double windows**

also with heating system



**double windows**

also with heating system



**vacuum sealing**

with O-ring sealing

**description**



**spray washer BF121-I**



**spray washer BF198**



**standard light fitting**



**EX light fitting**

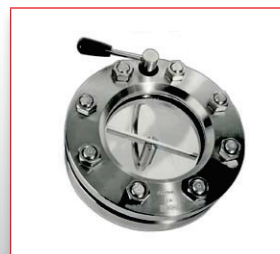
**description**



**wiper with T-handle BF190-T**



**wiper with freewheel BF190-F**



**wiper pressure-resistant BF195**



**protective grid**

**description**

## Available Additional Equipment

	high temp.	safety dbl. win.	dbl. windows	vacuum	BF121-I	BF198	light fitting	BF190-T/-F	BF195	prot. grid
BF 120	✓	✓	✓	✓	-	✓	✓	✓	✓	✓
BF 118	✓	✓	✓	✓	-	✓	✓	✓	-	✓
BF 220	✓	-	-	-	-	-	-	-	-	-
BF 225	✓	-	-	-	-	-	-	-	-	✓
BF 127	✓	-	-	✓	-	-	✓	✓	-	✓
BF 230	✓	✓	✓	✓	-	-	✓	✓	-	✓
BF 121	✓*	✓	-	✓	✓	-	✓	✓	-	✓
BF 1205	✓	✓	✓	✓	-	✓	✓	✓	✓	✓
BF 232	✓	✓	✓	✓	-	-	✓	✓	-	✓

all tank sight glass fittings are available with quartz glass for temperatures  $> 300\text{ °C}$   
 \* with graphite sealing up to  $280\text{ °C}$ , with quartz glass more than  $300\text{ °C}$

# NORIS Strainers

## Strainers DIN / ANSI



type	BF 140	BF 141	BF 150	BF 155	BF 146	BF 148
description	Y-type	threaded connection	basket strainer	pot strainer	flat sieve	hat sieve
pressure	PN 16 - PN 40	PN 16 - PN 40	PN 6 - PN 40	PN 6 - PN 40	PN 16 - PN 40	PN 16 - PN 40
size	DN 15 - DN 250	G (BSP) 1/4" - 2"	DN 15 - DN 200	DN 50 - DN 400	DN 15 - DN 400	DN 15 - DN 400
materials	<ul style="list-style-type: none"> <li>GS-C 25</li> <li>1.4408</li> <li>1.4571</li> </ul>	<ul style="list-style-type: none"> <li>carbon steel</li> <li>other materials on request</li> </ul>	optional	<ul style="list-style-type: none"> <li>all strainers are available with welding ends</li> <li>all strainers are available with ANSI-flanges</li> </ul>		

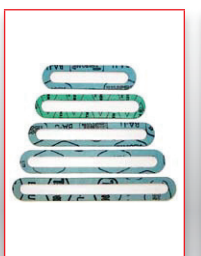
# NORIS Accessories

## Sight Glass Plates



description	soda-lime glass	borosilicate glass	borosilicate, long, reflex	borosilicate, long, transparent	META glass	quartz glass
norm	DIN 8902	DIN 7080	DIN 7081	DIN 7081	DIN 7079	-
temperature	up to 150 °C	up to 280 °C	up to 280 °C	up to 280 °C	up to 280 °C	> 300 °C

## Gaskets



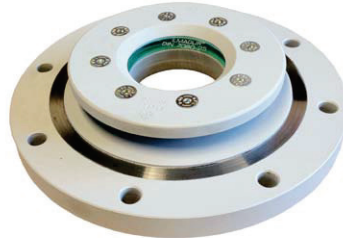
available materials
<ul style="list-style-type: none"> <li>aramid fibre</li> <li>graphite</li> <li>PTFE / GYLON® or similar</li> <li>Viton®</li> <li>silicone</li> <li>EPDM</li> <li>Perbunan®</li> <li>other materials available on request</li> </ul>

description	gasket, round	gasket, long
size	see data sheet	see data sheet

## Individual Manufacturing With Customers Specification



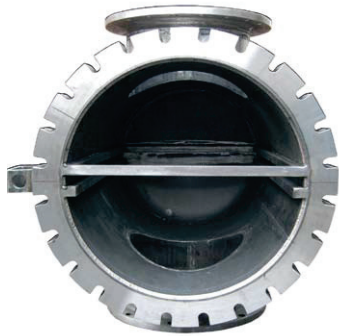
sight flow indicator with heating jacket



special tank sight glass fitting



outflow cone



pot strainer, DN 500



rectangular tank sight glass mounted in pipeline



tank sight glass with hinged radiation filter



inner lining: rubber or PFA



high-pressure design



high-pressure design with laser coupling

We manufacture all fittings individual according to your specifications and wishes as a special design.

Feel free to contact our experts for further information.



**NORIS** Armaturen  
Burkenstein GmbH & Co. KG

Puscherstraße 3  
D-90411 Nürnberg

Telefon: +49 (0) 911 / 52 15 063  
Fax: +49 (0) 911 / 52 24 40

info@noris-armaturen.com  
<http://www.noris-armaturen.com>