

Sight flow Indicator *eccentric*

with **butt weld ends** for pressure up to 160 bar
by Special design (for horizontal installation)

NORIS

Bauform 911-S

Application:

Through eccentric connections it is possible to work without any rest fluid. Provided that the indicator will be mounted horizontal..

Without rest fluid in the body.

Operating conditions:

Working pressure: 10 until 160 bar

Working temperature: 150 or 280°C

Installation:

Horizontal,

Options:

Flange connection

Light fittings

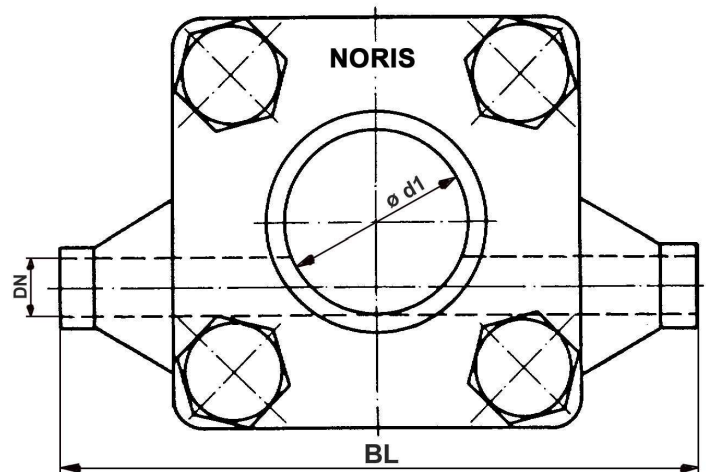
Materials:

| | |
|---------|---|
| Body | Carbon steel or Stainless steel |
| Glass | Borosilicate glass DIN 7080 Soda lime glass DIN 8902 |
| Gaskets | Graphite (or other materials) |

Ordering example:

Sight flow indicator Bauform 911-S
WN 1.4571; Borosilicate glass
Working pressure max. 85 bar
DN 50 / 60,3

Without rest fluid in
the body



Dimensions:

DN 10 until DN 80

Butt weld ends acc. to DIN 3239, part1



Modifications reserved

NORIS ARMATUREN Burkenstein GmbH & Co. KG

Puscherstrasse 3
D-90411 Nürnberg

Telefon: +49 (0) 911 / 52 150 63
Telefax: +49 (0) 911 / 52 24 40

Internet: Noris-Armaturen.de
E-Mail: Noris@Noris-Armaturen.de